

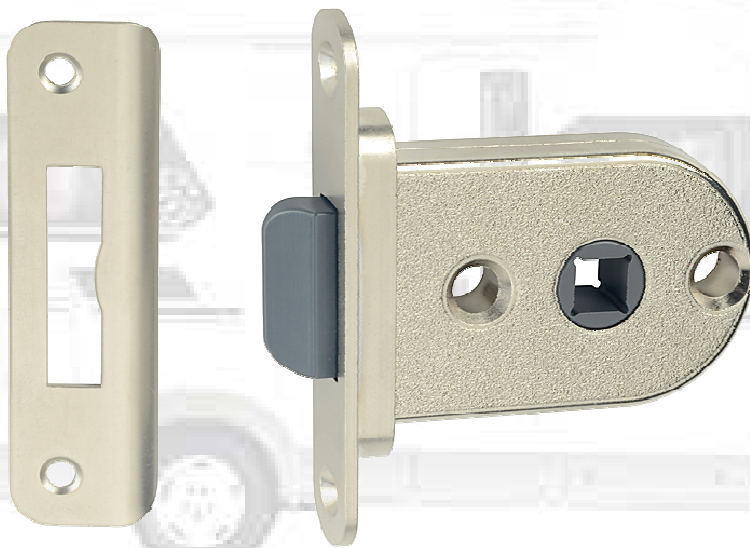
Locks for Caravans and Yachts



Latch Locks

Swing Bolt Locks

Dead locks



Locks for Caravans and Yachts

Latch locks, mortise type

Latch locks, surface mounted



Latch lock, mortise type

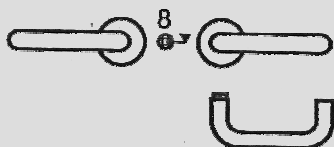
1581

- Latch and 8mm square made of fiberglass reinforced plastic
- 1 strike plate 2528, steel mat nickel plated (stainless steel color)

Latch lock, mortise type

Set 1583

- Complete with door handle (stainless steel mat) and fixing rose



Latch lock, surface mounted

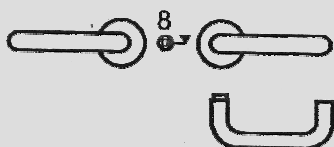
1593

- Latch and 8mm square made of fiberglass reinforced plastic
- 1 angular strike plate 2529, steel mat nickel plated (stainless steel color)
- 2 centering sleeves, brass
- 1 rose mat nickel plated (stainless steel color)

Latch lock, surface mounted

Set 1594

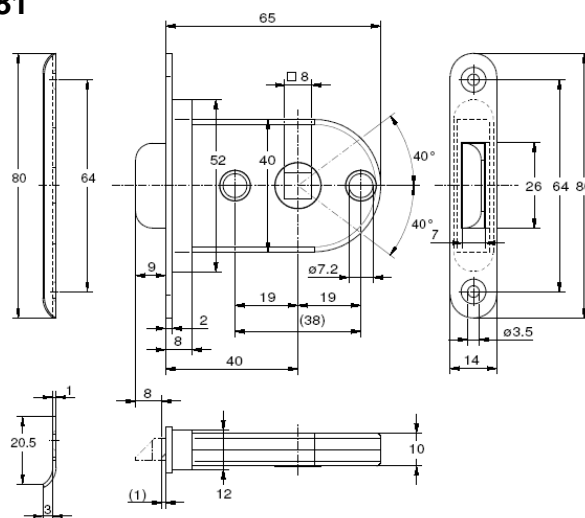
- Complete with door handle (stainless steel mat) and fixing rose



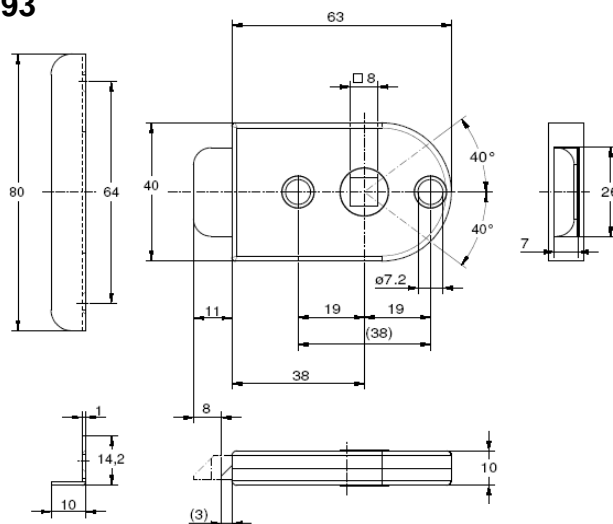
Art.-No.	finish lock	pack.	stock
1581 40002	steel nickel pated	10	•
1583 40002	steel nickel pated	1	•
1593 38002	steel nickel pated	10	•
1594 38002	steel nickel pated	1	•



1581



1593



Locks for Caravans and Yachts

Latch locks, mortise type

Latch locks, surface mounted



Technical Documentation

Product:

Latch lock, mortise type with 8mm square Art.-No. **1581** according to drawing, to be used by door handle with uphold spring/reset mechanism and square pin 8x8mm. DIN right or left usable .

Material / finish:

Lock case and cover metal nickel plated (zinc die-casting),
selvedge metal mat nickel plated (stainless steel color),
latch bolt and 8mm square made of fiberglass reinforced plastic EMS Grivory® GV-5H,
stainless steel pressure spring for latch.

Measures:

backset 40 mm
selvedge 80 x 14 mm, rounded, hole center distance 64mm
Lock case 52(40) x 65 x 12(10)mm
hole center distance 38mm for roses of door handle
lift 8mm

Weight without handle: 86 g

Tests realized according to DIN 18251-1, class 2:

chapter 7.3: 5N spring power for latch
chapter 7.4: 1.300N max. strain of latch
chapter 7.8: 0,3Nm (with optional uphold function)
chapter 7.9: 25Nm max. turning moment for handle

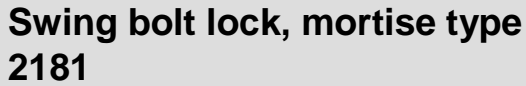
Further tests:

Long-term test: 20.000 locking cycles via square against both catches (right and left), functioning faultlessly after test
Long-term test of latch function: 50.000 cycles (self-locking), functioning faultlessly after test

Technical and security data sheets:

Technical information sheet Grivory® GV-5H and
security data sheet according to 1907/2006/EG, article 31,
of EMS-Chemie AG CH-7013 Domat/Ems

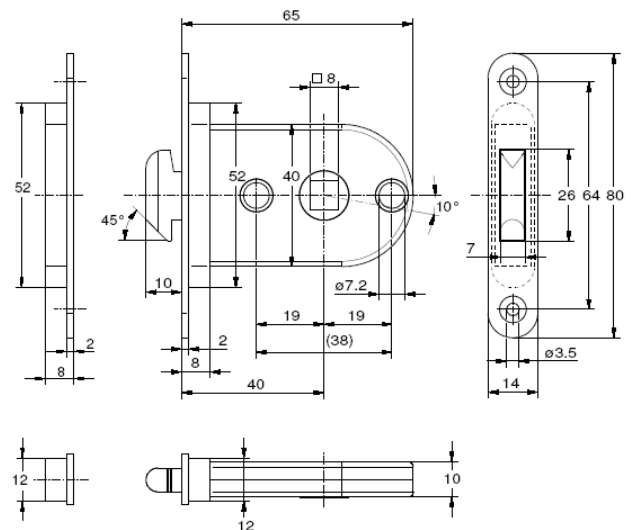
Swing bolt locks, mortise type



- ## Swing bolt lock, mortise type Set 2184

- Lock case and cover metal nickel plated
- Selvedge metal mat nickel plated (stainless steel color)
- 8mm square
- DIN right or left usable
- Backset 40 mm
- Selvedge 80x14 mm, rounded, hole center distance 64 mm
- Lock case 52 (40) x 65 x 12 (10) mm
- Hole center distance 38 mm for roses of door handle
- To be used with door handle with uphold spring/reset mechanism

Please note: also suitable for partition walls with sliding doors



Locks for Caravans and Yachts

Dead locks, mortise type

Dead locks, surface mounted



Dead lock, mortise type

1571

- Slide bolt and 8mm square metal nickel plated
- 1 strike plate 2544 inlet type, metal nickel plated (stainless steel color)

Dead lock, surface mounted

1572

- Slide bolt and 8mm square metal nickel plated
- 1 angular strike plate 2529, steel mat nickel plated (stainless steel color)
- 1 rose mat nickel plated (stainless steel color)
- 2 centering sleeves, brass

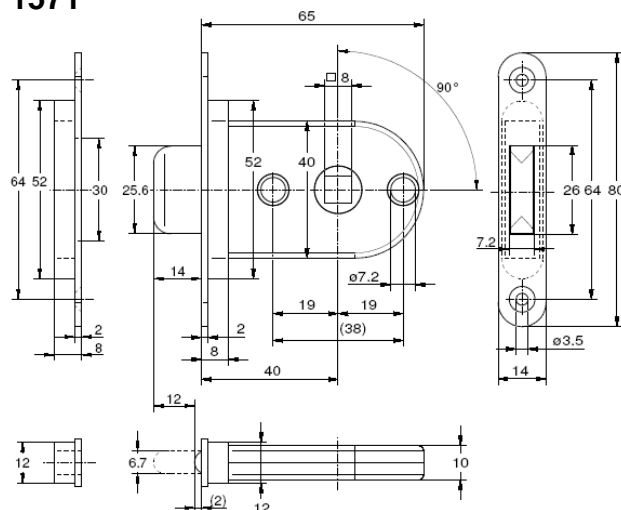
General specification/dimensions:

- Lock case and cover metal nickel plated
- Selvedge metal mat nickel plated (stainless steel color)
- 8mm square
- DIN right or left usable
- Backset 40 mm
- Selvedge 80x14 mm, rounded, hole center distance 64 mm
- Lock case 52 (40) x 65 x 12 (10) mm
- Hole center distance 38 mm for roses of door handle
- For operation, we recommend a turning knob with white/red indication for toilets

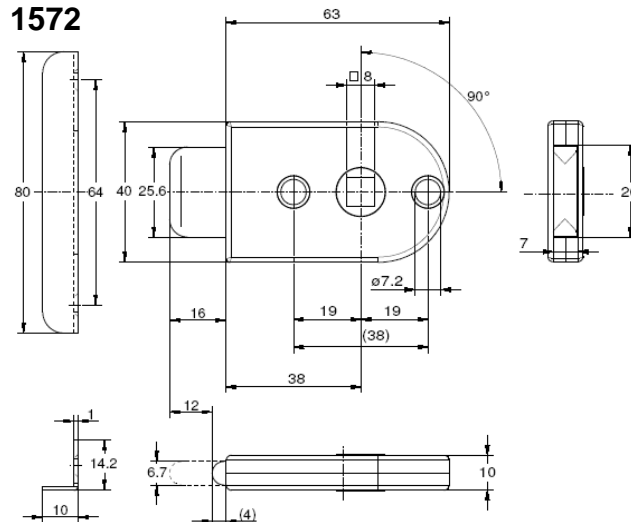
Art.-No.	finish lock	pack.	stock
1571 40002	steel nickel pated	10	•
1572 38002	steel nickel pated	10	•



1571



1572





Jul. Niederdrenk GmbH & Co. KG

Schlösser und Beschläge seit 1874 · Locks and Fittings since 1874

Zum Papenbruch 12

42553 Velbert · Germany

Fon +49-2053-498 0 · Fax +49-2053-498 79

info@junie.de · www.junie.de